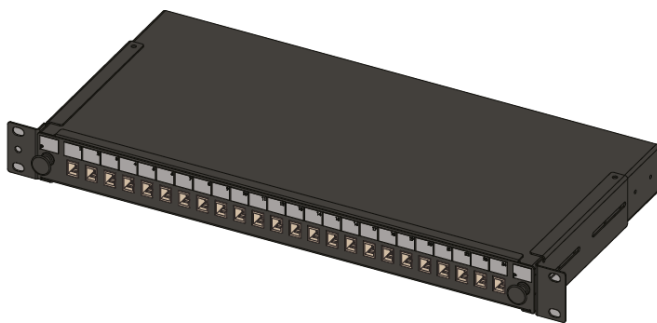


1U Black Sliding Patch Panel - 24 Position SC/LCD/E2000 up to 48 fibres



Item Description

This innovative, robust 1U sliding patch panel. This panel has been designed to accept up to 48 fibres housed within a 1U space. These panels include an internal mounting plate to install the Adaptors giving a reduction in the bend radius of the exiting patch cords also giving a more aesthetically pleasing installation. With the ability to use a full array of Adaptor types offering a flexible solution to the end user, enabling them to incorporate a multi functional panel which allow easy access during installation or re-work with no disturbance of the existing cable or fibres. In addition to the array of adaptors the panel also offers multiple cable entry solutions, up to 4 standard cable entry points for, loose tube, tight buffer, pre terminated and steel tape armoured cable. Each panel has integrated strength member tie positions also with the additional removable plate at the rear of the panel allows the installation of steel tape armoured cable.

Features/Benefits

- Up to 48 fibres in 1U
- Multiple Adaptor options available
- 24 Adaptor positions
- Recessed Adaptor positioning
- Individually labelled ports
- 45° open working angle
- Accepts loose tube, distribution and pre terminated cables
- RoHS, REACH SvHC and UL rated
- Fits standard 19"

Applications

- Data centres, premise installations, telecommunication networks
- Ethernet, Fibre Channel, ATM, LAN, MAN and WAN
- Data communication
- Indoor applications

Specifications

ELEMENT	CHARACTERISTIC
U Size	1U (44.4mm)
Width	482mm
Depth	205mm
Net weight	2.5 kgs
Packaged weight	3 kgs
Packaged dimensions	530mm W X 55mm H x 260mm D
IP rating	IP20
Suitable for Adaptor type	SC Simplex / LC Duplex / E2000
Number of ports	24
Cable Entry 20mm	2
Cable entry 25mm	2
Mounting Adjustment range	50mm
Material	Cold- rolled steel
Material thickness	1.2mm
Material coating	Powder coating
Colour	RAL 9004
Operating temperature	-40°C to +50°C
Designed in accordance with	TIA/EIA 568.C, ISO/IEC 11801, EN50173, IEC60304, IEC61754,
Compliant to	RoHS, Reach/SVHC

Technical drawing

